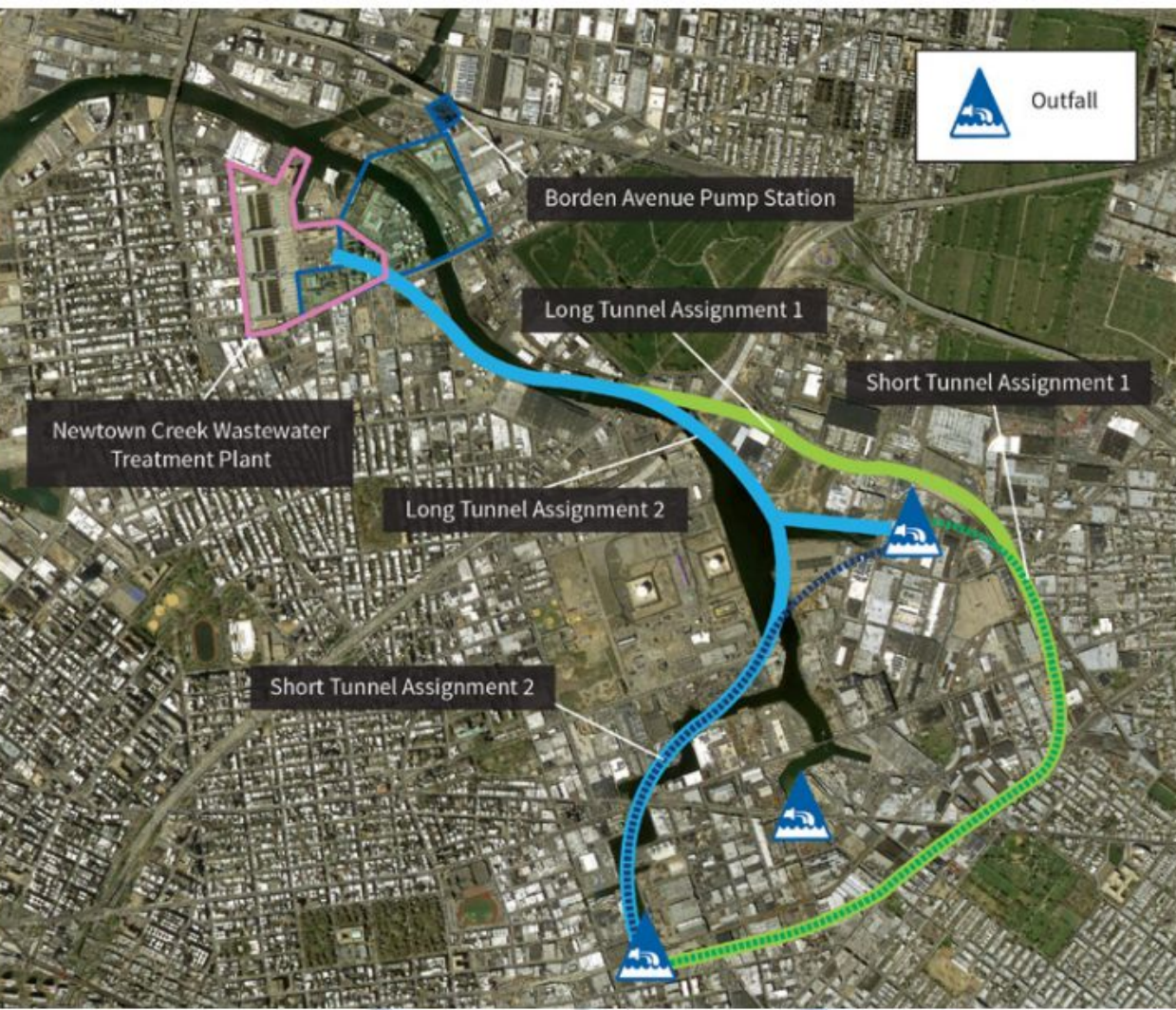


**Focussed Feasibility Study (FFS) report  
on NYC Long Term Control Plan (LTCP)  
for Combined Sewer Overflow (CSO)**

“The overall goal of the OU2 FFS is to determine if the volume controls prescribed by the LTCP designed to meet the requirements of the CWA program are sufficient to also meet the CERCLA requirements for the site.”



# Newtown Creek Long Term Control Plan

(How to fix sewage overflow)

Storage tunnel would:

- Connect to 3 largest CSOs
- Hold 39 Million Gallons
- Reduce 63% annually
- Cost \$650 Million (2018)
- Not be complete until 2042

Dutch Kills:

- Pump station to reduce CSO by 60% (90 MGY)
- Complete by 2029

Approved by NYS in 2018

# **Scenarios Evaluated by EPA**

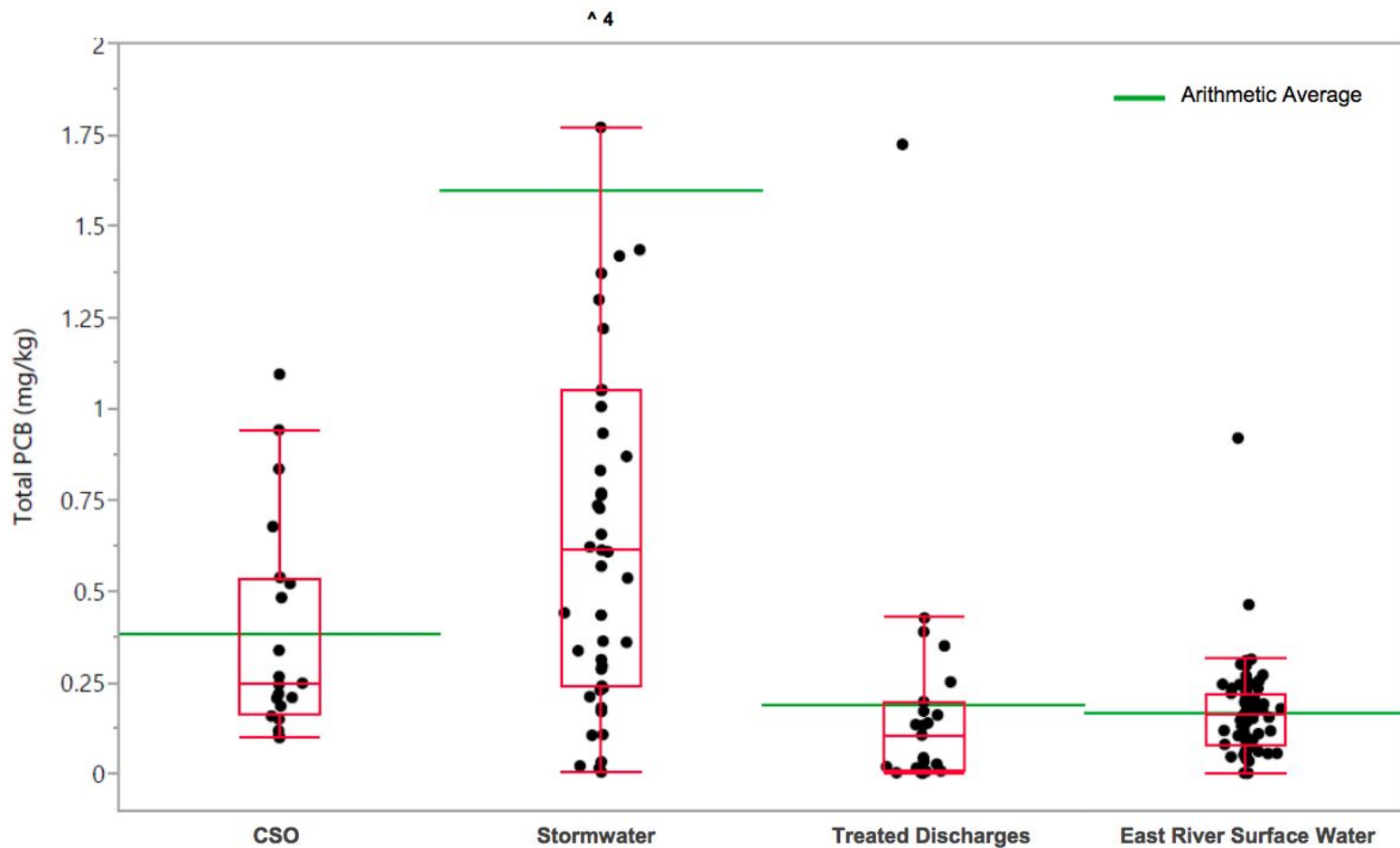
- 1. No Action**
- 2. No Further Action**
- 3. 100% CSO Control**

“Through the LOE analysis, it was determined that each of the alternatives evaluated provides roughly the same level of protectiveness; therefore, the volume control prescribed by the LTCP approved by NYSDEC, to be implemented by NYCDEP, is sufficient for the purposes of a CERCLA action and no further volume reduction measures are needed.”

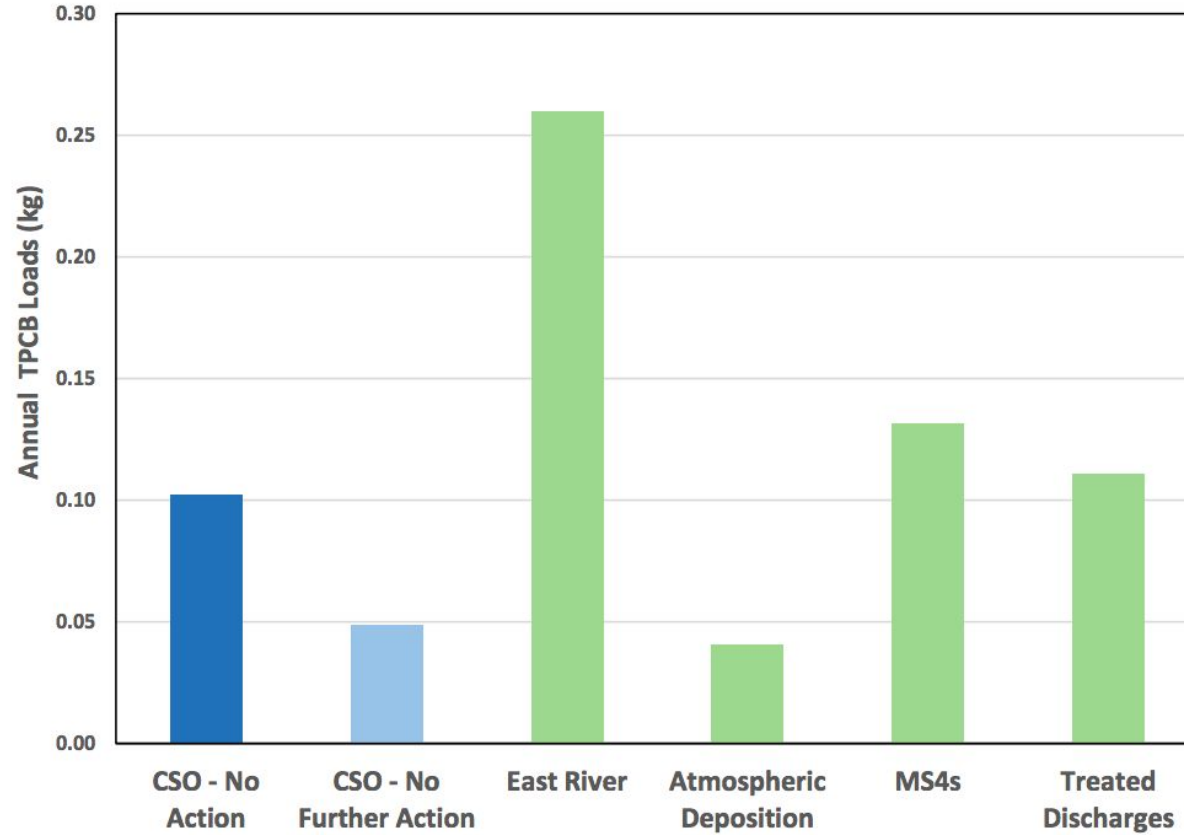
“EPA and NYSDEC will consider a traceback program to address any persistent increases in COPC concentrations from CSO discharges, if any are found. If required, a track-back program would identify sources of elevated contaminant concentrations within the sewershed, so they can be addressed either through tighter permit controls or upland action, as appropriate.”

“These additional control actions 12 could include, but are not necessarily limited to, the placement of sediment traps and/or oil sorbent pads at the end of CSO discharge pipes and in-creek maintenance dredging to address potential accumulation of contaminated solids near the CSO discharges.”

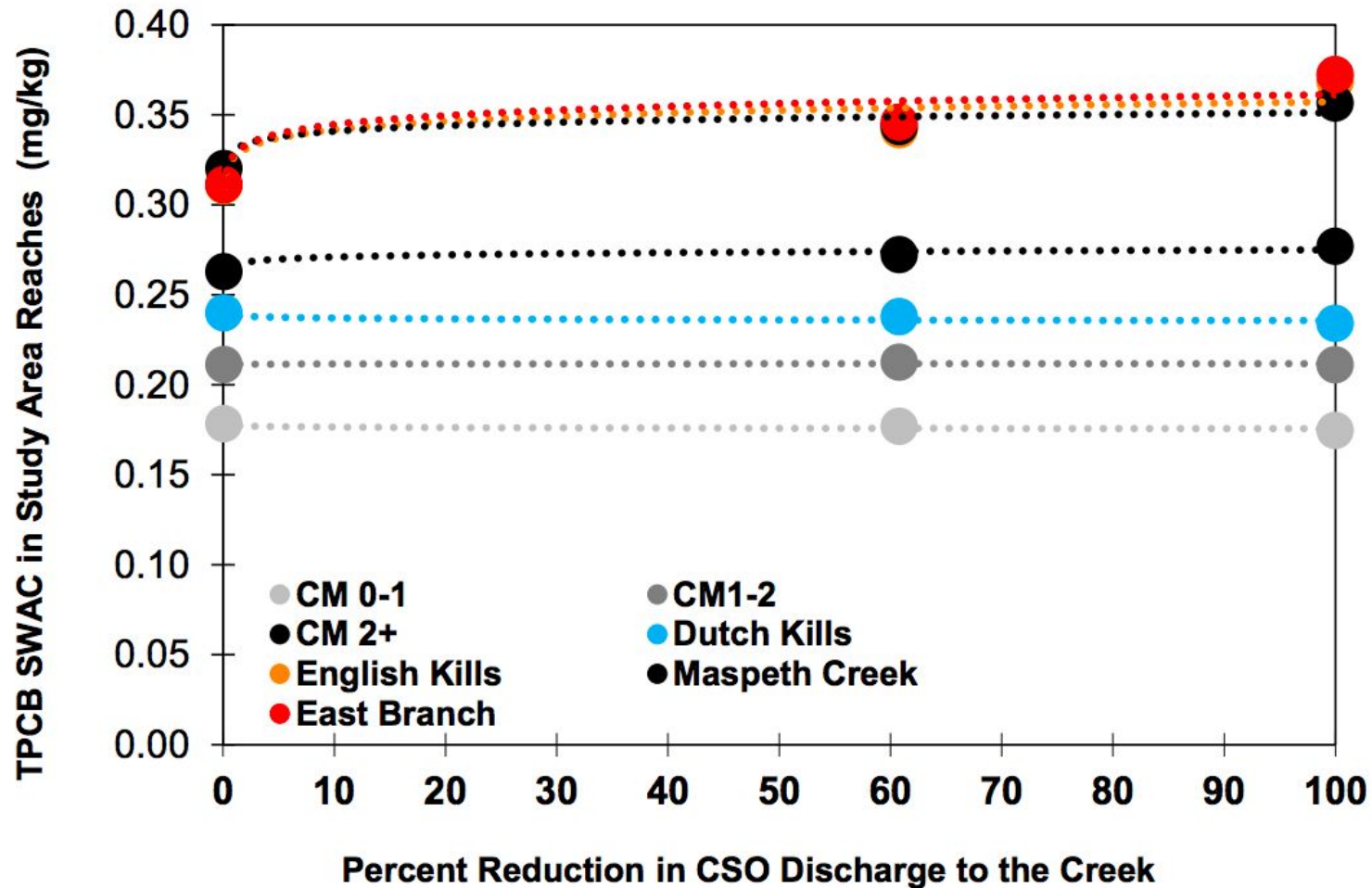
Figure 3b - Comparison of Particulate Concentrations in CSOs with Particulate Concentrations from Other Evaluated Inputs TPCBs



**Figure 4b - Comparison of TPCB Loads from CSOs and Other Evaluated Inputs to the Study Area**







# EPA Hearings

**Monday, December 9th**

6:30 to 8:30 P.M.

Sunnyside Community Services

43-31 39th Street

Queens, New York 11104

**Wednesday December 11th**

6:30 to 8:30 P.M.

P.S. 110

124 Monitor Street

Brooklyn, New York 11222

EPA will accept written comments on the Proposed Plan between November 21st and December 23rd, 2019. Written comments should be addressed to:

**Mark Schmidt**

Remedial Project Manager

U.S. Environmental Protection Agency

290 Broadway, 18th Floor

New York, NY 10007

Email: [schmidt.mark@epa.gov](mailto:schmidt.mark@epa.gov)